

GILENYA[®] *go* program[®]
(fingolimod) capsules 0.5 mg

READY TO START **GILENYA**[®]

THE GILENYA GO PROGRAM[®] IS HERE TO HELP!



LET'S GET STARTED ▶

Not actual patients.

LET'S GET STARTED TOGETHER

The GILENYA® *Go Program*® is here to help you start and continue through your treatment journey in a way that works for you.

Tap below to discover how we can help you start and stay on treatment:

Connecting With Your Navigator ▶

2 Steps to Starting GILENYA ▶

Additional and Ongoing Support ▶

What's Next ▶

Who is the GILENYA *Go Program* for?

Anyone who's prescribed GILENYA! Your doctor may have automatically enrolled you, but if not, you can sign up by calling **1-800-GILENYA** (1-800-445-3692) or you can enroll at **start.gilenya.com**.

DID YOU KNOW?

THE GO PROGRAM DOESN'T JUST PROVIDE SUPPORT TO HELP YOU GET STARTED—WE'RE ALSO HERE FOR YOU AT ANY POINT DURING YOUR TREATMENT ON GILENYA. HAVING TROUBLE GETTING A REFILL? NEW HEALTH INSURANCE PLAN? WE'RE HERE FOR YOU!



LET'S GET STARTED ▶



WE'LL BE IN TOUCH SOON

GILENYA® *go*
program®

Your GILENYA® *Go Program*® Navigator is dedicated to supporting you and will be reaching out in the next few days.

Your Navigator can give you personalized one-on-one support for things like figuring out your insurance coverage, finding ways for you to save, and helping you fill your prescription for GILENYA.



You'll also have guidance through the **2 steps** you need to complete to make GILENYA a part of your routine.

YOUR NAVIGATOR WILL BE CALLING SOON! LOOK OUT FOR 1-800-445-3692, A DIFFERENT 1-800 NUMBER, OR "UNKNOWN" ON YOUR CALLER ID, AND MAKE SURE YOU ANSWER WHEN THEY CALL. THE SOONER YOU CONNECT WITH YOUR NAVIGATOR, THE SOONER YOU CAN GET STARTED!

LEARN ABOUT 2 STEPS TO STARTING GILENYA ▶

The GILENYA *Go Program* is available at 1-800-GILENYA (1-800-445-3692), 8:00 AM–9:00 PM ET, Mon–Fri, excluding public holidays. There is a dedicated parent line at 1-800-598-1410 during the hours above.



THE 2 STEPS TO STARTING GILENYA® (fingolimod)

Before GILENYA can become a part of your routine, there's just 2 steps that need to be completed:

Step 1: Pretests

Step 2: Your first day taking GILENYA

Members of the GILENYA Go Program® will receive a Welcome Kit containing info to get started on treatment.

Your dedicated Navigator will also walk you through the steps, get the process started, and answer questions you may have.

[LEARN MORE ABOUT THE 2 STEPS](#) ►



DID YOU KNOW?
**TESTS MAY TAKE PLACE IN THE
COMFORT OF YOUR OWN HOME* OR
AT YOUR HEALTH CARE PROFESSIONAL'S
OFFICE. YOU AND YOUR HEALTH CARE
PROFESSIONAL DECIDE WHAT WORKS
BEST FOR YOU!**



*Eligible commercially insured and uninsured patients may receive listed services for free at home. For questions regarding covered services, please contact your GILENYA Navigator.

Not an actual patient.



STARTING GILENYA® (fingolimod) STEP 1

1. Pretests

Before you start GILENYA, your health care professional will request some tests.

If you're enrolled in the GILENYA Go Program®, your Navigator may help you schedule them at a time and place that works for you. The program can also assist with medical costs associated with pretests for eligible patients.*

These are some of the tests you can expect before starting GILENYA:



Routine blood tests

including complete blood count and liver enzyme checks



Eye exam

to look for pre-existing conditions and help monitor potential changes



ECG

or electrocardiogram, which tests whether extra precautions should be taken in case of certain heart conditions

For more information, please see the full Prescribing Information, including Medication Guide, for GILENYA.

*Eligible commercially insured and uninsured patients may receive listed services for free at home. For questions regarding covered services, please contact your GILENYA Navigator.

Not an actual patient.



STARTING GILENYA® (fingolimod)

STEP 2

2. Your first day taking GILENYA

Once you complete your pretests, you'll take your first dose of GILENYA while being monitored by a health care professional—this is called a **first-dose observation (FDO)**.

Your FDO can be done in your own home*, at your health care professional's office, or at a nearby medical facility. You and your health care professional will decide where's best.

If you're enrolled in the GILENYA Go Program® your Navigator can help you schedule your FDO.

Once you complete your FDO and your health care professional clears you for continued treatment, you're all set! GILENYA becomes a part of your routine.

DID YOU KNOW?

THE GILENYA GO PROGRAM CAN HELP YOU MANAGE YOUR REFILLS!

- ***WHEN IT'S TIME FOR A REFILL, THE BROAD GILENYA SPECIALTY PHARMACY NETWORK CAN HELP COORDINATE DELIVERY***
- ***PATIENTS ON THE 0.25-MG DOSE WILL RECEIVE GILENYA AT NO COST***



Anyone who's prescribed GILENYA can be a member of the GILENYA Go Program and get personalized support. If your doctor didn't enroll you, you can sign up by calling 1-800-GILENYA (1-800-445-3692) or you can enroll at start.gilenya.com

*Eligible commercially insured and uninsured patients may receive listed services for free at home. For questions regarding covered services, please contact your GILENYA Navigator.



YOU CAN RELY ON US FOR SUPPORT

After completing your FDO, you can continue to rely on the GILENYA® Go Program® to provide the support you need to help stay on GILENYA.

Ongoing support for GILENYA Go Program members includes:



Financial support. Your Navigator will look into your coverage and determine your eligibility for our financial assistance programs such as:

- **The GILENYA Prescription Co-Pay Support Program**, which can help commercially insured patients by reducing the cost of your co-pay to as little as \$0*
- **The GILENYA Medical Co-Pay Support Program**, which may offer financial support for pretests and first-dose observation required to start treatment†

DID YOU KNOW?

**>95% OF PEOPLE IN THE US WITH HEALTH INSURANCE HAVE COVERAGE FOR GILENYA.‡ MOST ELIGIBLE PEOPLE HAVE A \$0* CO-PAY FOR GILENYA!
YOUR NAVIGATOR CAN HELP DETERMINE YOUR COVERAGE AND ELIGIBILITY.**



*Limitations apply. Up to an \$18,000 annual limit. Offer not valid under Medicare, Medicaid, or any other federal or state program. Novartis reserves the right to rescind, revoke, or amend this program without notice. Limitations may apply in MA and CA. See complete Terms & Conditions at GILENYA.com.

†Medical co-pay support for covered initial assessments/examinations or for first-dose observations (FDO) is provided without regard to whether the patient continues on with GILENYA therapy. People for whom GILENYA has been prescribed are required to report any benefits they receive under the GILENYA Medical Co-Pay Support Program to their insurance company. This offer is not valid for prescriptions and medical assessments for which payment may be made in whole or in part under federal or state health programs, including but not limited to Medicare or Medicaid, or for residents of RI. Valid only for those with commercial insurance. This program is subject to termination or modification at any time.

‡As of June 2019, Novartis Pharmaceuticals Corporation does not endorse any particular plan. Check with your individual health plans.



YOU CAN RELY ON US FOR SUPPORT

In addition to financial support, ongoing support also includes:



Periodic check-ins from the GILENYA® *Go Program*® throughout your first 2 years of treatment. We'll reach out to see how you're doing, and we'll also send you helpful resources.

We're also just a phone call away if anything comes up at any point during your treatment.



Not an actual patient.

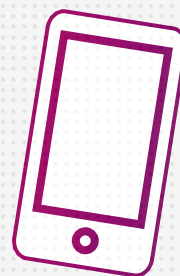


WHAT'S NEXT

If you're currently not a member of the GILENYA® *Go Program*® you can sign up by calling 1-800-GILENYA (1-800-445-3692) or you can enroll at start.gilenya.com.

GILENYA *Go Program* members will receive a call from their GILENYA Navigator.

The sooner you connect with your Navigator, the sooner they can help you get started on treatment, so be sure to pick up!



You can also call us at **1-800-GILENYA** (1-800-445-3692), 8:00 AM–9:00 PM ET, Mon–Fri, excluding public holidays.

Connect with us on social media!



GILENYA is a registered trademark of Novartis AG.
GO PROGRAM is a registered trademark of Novartis AG.



Novartis Pharmaceuticals Corporation
East Hanover, New Jersey 07936-1080

© 2021 Novartis

6/21

123013